

REV.	ECN NO.	LOCATIONS	DESCRIPTION	DATE	DESIGN
A0			NEW RELEASE	12/01'22	Derek

CUSTOMER DRAWING

RoHS Compliant

ORDERING INFORMATION

FBD0510 - XX (XX R)

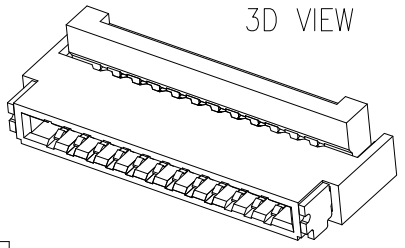
① ② ③ ④

① **PRODUCT SERIES**
 ZIF FPC/FFC Connector
 Pitch 0.50mm / Height 1.0mm
 Back-Flip / SMT TYPE

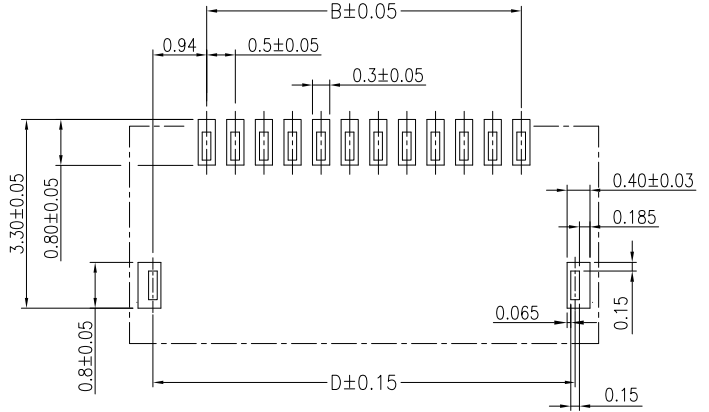
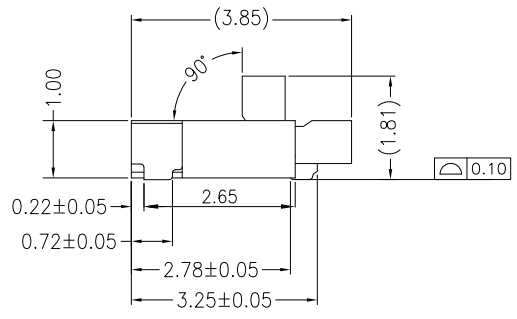
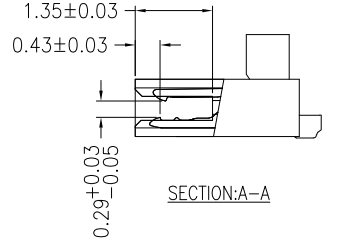
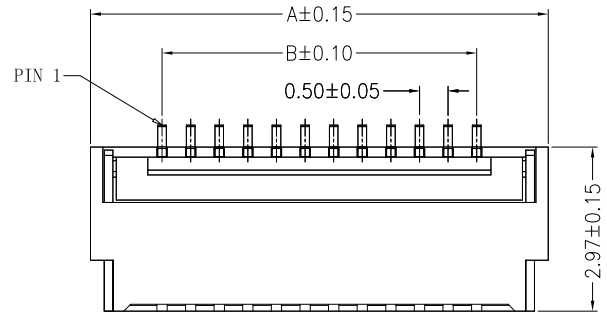
② **NUMBER OF CONTACTS:**
 See DIM. Table

③ **PLATING**
 01: GOLD FLASH

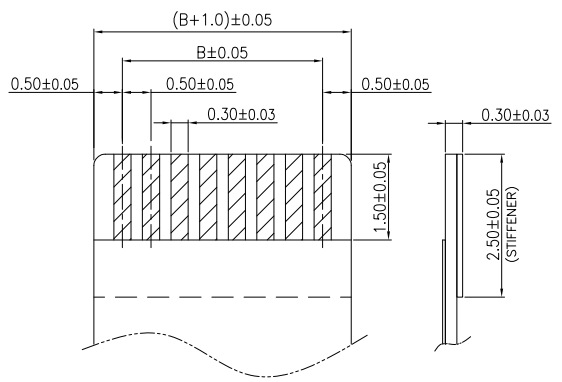
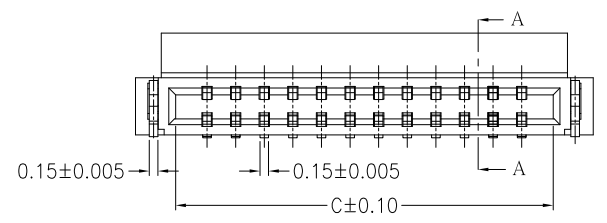
④ **PACKING:**
 R: Reel



3D VIEW



RECOMMEND PCB LAYOUT
 GENERAL TOLERANCE: ±0.05



RECOMMENDED FPC/FFC DIMENSION

DIMENSION TABLE.

PIN NO.	DIMENSION				PIN NO.	DIMENSION			
	A	B	C	D		A	B	C	D
04	4.00	1.50	2.60	3.38	33	18.50	16.00	17.10	17.88
05	4.50	2.00	3.10	3.88	34	19.00	16.50	17.60	18.38
06	5.00	2.50	3.60	4.38	35	19.50	17.00	18.10	18.88
07	5.50	3.00	4.10	4.88	36	20.00	17.50	18.60	19.38
08	6.00	3.50	4.60	5.38	37	20.50	18.00	19.10	19.88
09	6.50	4.00	5.10	5.88	38	21.00	18.50	19.60	20.38
10	7.00	4.50	5.60	6.38	39	21.50	19.00	20.10	20.88
11	7.50	5.00	6.10	6.88	40	22.00	19.50	20.60	21.38
12	8.00	5.50	6.60	7.38	41	22.50	20.00	21.10	21.88
13	8.50	6.00	7.10	7.88	42	23.00	20.50	21.60	22.38
14	9.00	6.50	7.60	8.38	43	23.50	21.00	22.10	22.88
15	9.50	7.00	8.10	8.88	44	24.00	21.50	22.60	23.38
16	10.00	7.50	8.60	9.38	45	24.50	22.00	23.10	23.88
17	10.50	8.00	9.10	9.88	46	25.00	22.50	23.60	24.38
18	11.00	8.50	9.60	10.38	47	25.50	23.00	24.10	24.88
19	11.50	9.00	10.10	10.88	48	26.00	23.50	24.60	25.38
20	12.00	9.50	10.60	11.38	49	26.50	24.00	25.10	25.88
21	12.50	10.00	11.10	11.88	50	27.00	24.50	25.60	26.38
22	13.00	10.50	11.60	12.38	51	27.50	25.00	26.10	26.88
23	13.50	11.00	12.10	12.88	52	28.00	25.50	26.60	27.38
24	14.00	11.50	12.60	13.38	53	28.50	26.00	27.10	27.88
25	14.50	12.00	13.10	13.88	54	29.00	26.50	27.60	28.38
26	15.00	12.50	13.60	14.38	55	29.50	27.00	28.10	28.88
27	15.50	13.00	14.10	14.88	56	30.00	27.50	28.60	29.38
28	16.00	13.50	14.60	15.38	57	30.50	28.00	29.10	29.88
29	16.50	14.00	15.10	15.88	58	31.00	28.50	29.60	30.38
30	17.00	14.50	15.60	16.38	59	31.50	29.00	30.10	30.88
31	17.50	15.00	16.10	16.88	60	32.00	29.50	30.60	31.38
32	18.00	15.50	16.60	17.38					

DIM	TOL
x	±0.40
x.x	±0.30
x.xx	±0.20
x.xxx	±0.10

Note:

- Material
 - 1.1: Housing: High-Temp., UL94V-0.
 - 1.2: Actuator: High-Temp., UL94V-0.
 - 1.3: Contact: Copper Alloy.
 - 1.4: Fit: Copper Alloy.
- Plating
 - 2.1: Contact: Gold on contact area over Nickel under-plated overall.
 - 2.2: Fit: Tin over Nickel under-plated overall.

SUNFUN		SUNFUN TECHNOLOGY LTD			
DRAW NO.	FBD0510(A0)	DATE	MATERIAL: SEE NOTES		DRAW NAME:
DESIGN:	Derek	12/01'22	FINISH: SEE NOTES		ZIF FPC/FFC Connector
CHECK:	Derek	12/01'22	FILE: FBD0510(A0)		Pitch 0.50mm / Height 1.0mm
REVIEW:	Eric	12/01'22	P/N: FBD0510-XX(21R)		Back-Flip / SMT TYPE
APPROVED	Eric	12/01'22	REV. A0	SCALE	MODEL: P0.5 FPC CONN
					UNIT: mm
					SHEET: 1/1